

Beach Access Staircase at Point Ritchie

Here, at Point Ritchie, you can gaze at the Southern Ocean, and even spot southern right whales just a few hundred metres offshore during the winter and spring months. More than just a stunning location with a view, Point Ritchie holds archaeological significance. Research suggests that human occupation in the area started from perhaps 120,000 years ago. As scientists continue their research, the implications of their results would affect global understandings of human migration.

The existing beach access staircase were damaged and required urgent replacement to ensure safety for visitors. Treadwell was engaged to supply and provide design consultation for the new staircase.

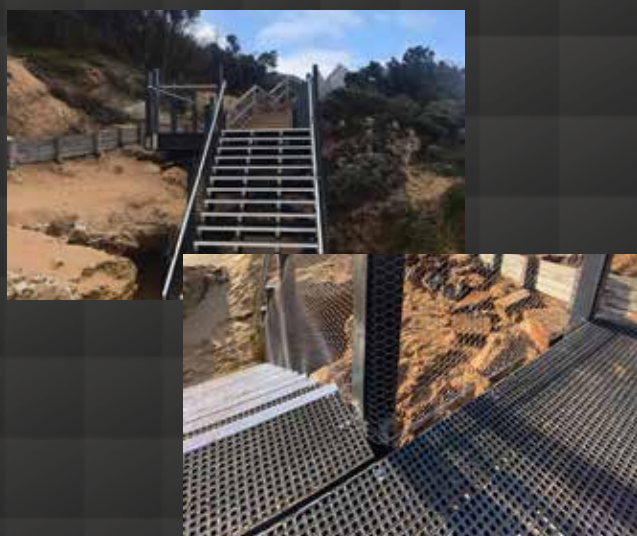
Project Challenges

- Structure would be exposed to the corrosive coastal environment. Traditional materials had proven unable to maintain integrity.
- Installation was done during the COVID lockdowns. Schedules had to remain fluid to accommodate various timelines.
- Debris had a tendency to accumulate and stagnate, thus reducing non-slip effectiveness.

PROJECT INFORMATION

Project Category:	Recreational Public Infrastructure
Scope of Work:	Design and supply of beach access staircase
Treadwell Products:	EnviroTREAD™ ACCESS SYSTEMS GratEX® FRP Mini Mesh Grating and stair treads

Treadwell Solution:



1

High performance GratEX® FRP Mini Mesh grating was specified in building the structure as a preferred solution over traditional materials.

2

Sand and other debris will not stagnate on the surface, creating a self-maintaining anti-slip surface.

3

Regular communication among the installation and delivery teams ensured that the project could be completed smoothly.

4

FRP is simply fabricated and modified on site. This means there is no need for any hot works permit.

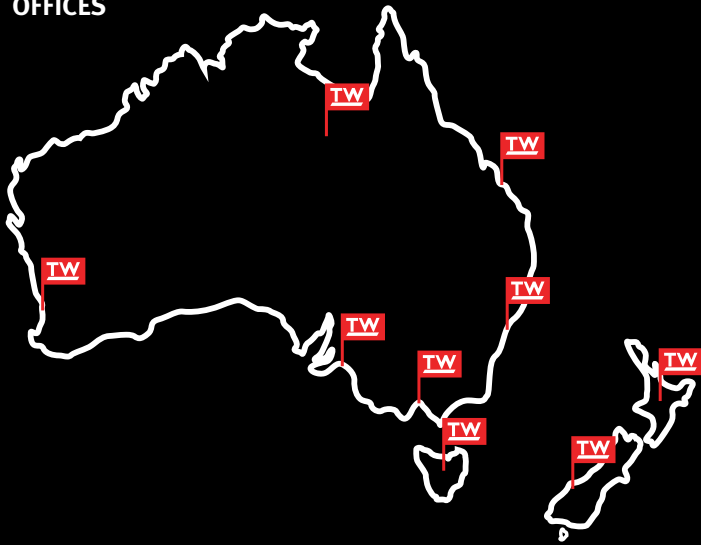
5

Being lightweight and easy to install, FRP is very manageable during construction.

6

Given the nature of FRP, any system utilising it is virtually maintenance free, keeping maintenance costs to a minimum.

OFFICES



ABOUT TREADWELL

At Treadwell Group, our core business divisions have been developed utilising the latest fibreglass reinforced plastic (FRP) technology. With constant innovation and evolution of our offerings, we grow in competence with each experience in delivering unparalleled solutions to a diversified index of industries which include the water and wastewater, mining, oil and gas, public infrastructure, marine sectors. The progression of our products has been focused on ensuring extended design life in varied applications, enabling us to support our continuing commitment to satisfy and add value to our client's endeavours.

Australia

SOUTH AUSTRALIA

▶ **ADELAIDE (HEAD OFFICE & WAREHOUSE)**

58 DEEDS ROAD
NORTH PLYMPTON, SA 5037

▶ **STRATHALBYN (FACTORY & WAREHOUSE)**

22 DUNREATH ROAD
STRATHALBYN, SA 5255

NEW SOUTH WALES

▶ **SYDNEY (DISTRIBUTION CENTRE)**

2 COAL PIER ROAD
BANKSMEADOW, NSW 2109

▶ **SYDNEY (OFFICE)**

LEVEL 6, 10 HERB ELLIOT AVENUE
SYDNEY OLYMPIC PARK, NSW 2127

▶ **WAGGA(OFFICE)**

BALL PL
EAST WAGGA WAGGA, NSW 2650

VICTORIA

▶ **MELBOURNE (DISTRIBUTION CENTRE)**

107 GATEWAY BOULEVARD
EPPING, VIC 3076

QUEENSLAND

▶ **BRISBANE (DISTRIBUTION CENTRE)**

4 HOWARD SMITH DRIVE
PORT OF BRISBANE, QLD 4178

WESTERN AUSTRALIA

▶ **PERTH (OFFICE & WAREHOUSE)**

4 ELMSFIELD ROAD
MIDVALE, WA 6056

TASMANIA

▶ **BURNIE (DISTRIBUTION CENTRE)**

8 RIVER ROAD
WIVENHOE, TAS 7320

New Zealand

NORTH ISLAND

▶ **AUCKLAND (OFFICE)**

40 ONEHUNGA MALL
ONEHUNGA, AUCKLAND 1061

SOUTH ISLAND

▶ **GREYMOUTH (OFFICE)**

10 CHESTERFIELD STREET, BLAKETOWN
GREYMOUTH 7805

Australia

P 1800 246 800 sales@treadwellgroup.com.au
F 1300 763 521 treadwellgroup.com.au

New Zealand

P 0800 246 600 sales@treadwellgroup.co.nz
F 0800 244 600 treadwellgroup.co.nz